

Section 2

REAL SECTOR INDICATORS

Table (1) Gross Domestic Product at Market Prices (Current Prices).....	11
Table (2) Gross Domestic Product by Sector at Factor Cost (Current Prices).....	12
Table (3) Distribution of Total Investments by Economic Agents and Production.....	13
Indices for Main Economic Sectors	

Table (I) :Gross Domestic Product (at Market Prices) ^{1/}
(In Current Prices)

	(LE Billions)						
	2004/05	2005/06	2006/07	2007/08	2008/09	2009/10* ^{2/}	2010/11*
GDP	538.5	617.7	744.8	895.5	1042.2	1206.6	1371.8
	(11.0)	(14.7)	(20.6)	(20.2)	(16.4)	(15.8)	(13.7)
Domestic Demand	550.7	632.8	778.9	945.6	1111.4	1269.8	1425.4
Final Consumption	453.9	517.1	623.6	745.1	911.4	1034.5	1190.9
Private Consumption	385.3	441.2	539.2	647.6	793.1	899.8	1035.9
Public Consumption	68.6	75.9	84.4	97.5	118.3	134.7	155.0
Investment ^{3/}	96.8	115.7	155.3	200.5	200.0	235.3	234.5
Net Exports	-12.2	-15.1	-34.1	-50.1	-69.2	-63.2	-53.6
Exports of Goods and Services ^{4/}	163.4	193.2	225.3	295.9	260.1	257.6	282.0
Imports of Goods and Services	175.6	208.3	259.4	346.0	329.3	320.8	335.6
Memorandum Items: (In Percent of GDP)							
Final Consumption	84.3	83.7	83.7	83.2	87.4	85.7	86.8
Investment ^{3/}	18.0	18.7	20.9	22.4	19.2	19.5	17.1
Exports of Goods and Services ^{4/}	30.3	31.3	30.2	33.0	25.0	21.3	20.6
Imports of Goods and Services	32.6	33.7	34.8	38.6	31.6	26.6	24.5

Source: Ministry of Economic Development.

* Preliminary, subject to change. According to the Ministry of Economic Development, GDP (at market prices) for 2011/2012 is projected to reach LE 1570 billion compared to a revised figure of LE 1371.8 billion in 2010/2011.

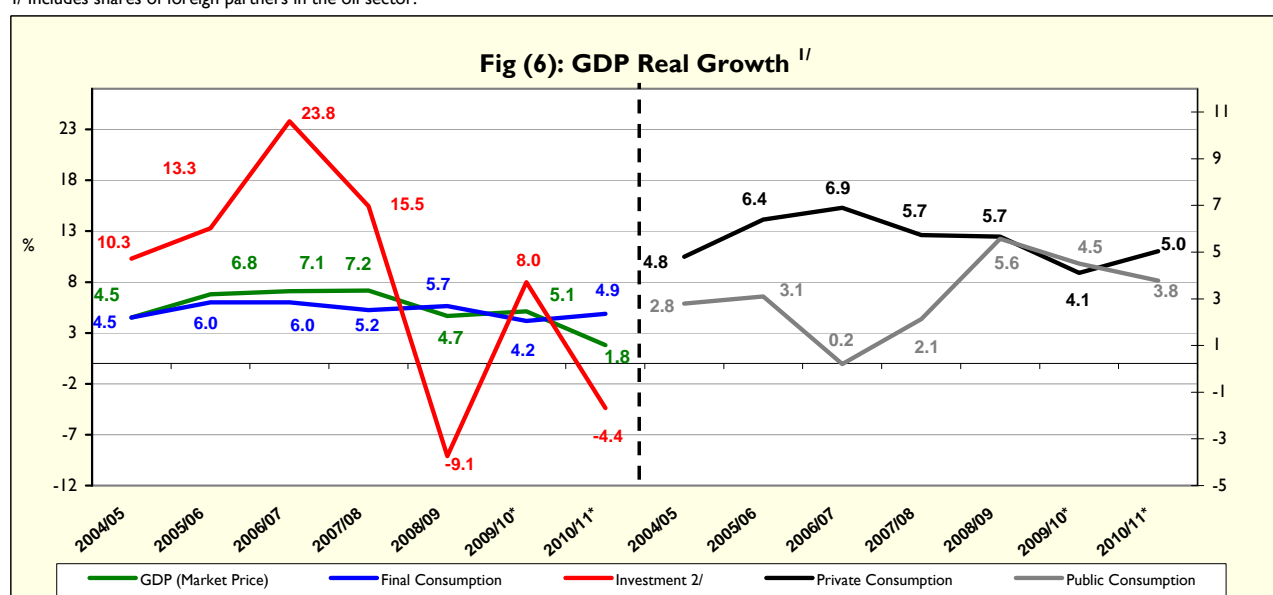
() Percent change over same period in the previous year.

1/ Includes net indirect taxes.

2/ It is noteworthy to mention that the Ministry of Economic Development revised GDP data for FY 2009/2010 on a quarterly basis.

3/ Includes fixed capital formation and change in inventory. The change in inventory amounts to LE 5.4 billion during FY 2010/11, compared to LE 3.5 billion during FY 2009/10.

4/ Includes shares of foreign partners in the oil sector.



Source: Ministry of Economic Development.

* Preliminary, subject to change.

1/ Using 2001/02 prices for the period 2002/03 - 2006/07, and 2006/07 prices for 2007/08, 2008/09, 2009/10 and 2010/11.

2/ Includes fixed capital formation and change in inventory.

Table (2) : Gross Domestic Product by Sector (at Factor Cost)
(In Current Prices)

(LE Millions)

	2004/05	2005/06	2006/07	2007/08	2008/09	2009/10 ^{1/}	2010/11 [*]
GDP	506,511	581,144	710,388	855,302	994,055	1,150,590	1,309,906
	(11.0)	(14.7)	(22.2)	(20.4)	(16.2)	(15.7)	(13.8)
Total Commodity Sector	259,182	305,094	360,530	436,727	508,001	591,903	682,156
	(9.1)	(17.7)	(18.2)	(21.1)	(16.3)	(16.5)	(15.2)
Agriculture, Forestry and Fishing	75,291	81,766	99,953	113,104	135,465	160,970	190,159
Extractive Industry	64,026	89,834	103,656	133,674	147,966	165,747	195,136
Petroleum	35,623	40,586	44,059	56,722	61,759	68,538	81,566
Natural Gas	27,555	48,311	56,590	73,495	82,206	92,538	108,206
	(20.6)	(75.3)	(17.1)	(29.9)	(11.9)	(12.6)	(16.9)
Other	848	937	3,007	3,457	4,001	4,671	5,364
Manufacturing Industry	89,981	98,693	114,475	139,003	164,523	194,290	216,184
Petroleum Refinement	4,965	5,601	6,055	7,922	10,257	12,516	14,829
Other	85,016	93,092	108,420	131,081	154,266	181,774	201,355
Electricity	7,838	8,880	9,880	11,507	13,043	14,897	16,832
Water	1,941	2,158	2,390	2,659	2,977	3,390	3,775
Construction and Building	20,106	23,763	30,175	36,780	44,026	52,609	60,070
	(8.7)	(18.2)	(27.0)	(21.9)	(19.7)	(19.5)	(14.2)
Total Production Services	162,877	183,567	233,052	279,606	318,566	364,518	404,837
	(14.1)	(12.7)	(27.0)	(20.0)	(13.9)	(14.4)	(11.1)
Transport and Warehousing	21,579	24,519	29,549	34,790	40,962	47,400	53,351
Telecommunications	10,182	11,974	23,062	27,151	31,185	34,818	37,301
Suez Canal	20,154	23,399	24,084	28,729	26,826	25,803	29,311
	(26.8)	(16.1)	(2.9)	(19.3)	-(6.6)	-(3.8)	(13.6)
Wholesale and Retail Trade	56,366	63,583	77,675	93,382	113,398	133,774	150,658
Financial Intermediation	26,428	28,798	27,531	31,756	36,125	41,174	44,834
Insurance and Social Insurance	11,455	12,497	26,372	31,375	35,689	41,521	47,627
Tourism (Hotels and Restaurants)	16,713	18,798	24,778	32,424	34,382	40,028	41,755
	(32.0)	(12.5)	(31.8)	(30.9)	(6.0)	(16.4)	(4.3)
Total Social Services	84,452	92,483	116,806	138,970	167,488	194,170	222,912
	(11.0)	(9.5)	(26.3)	(19.0)	(20.5)	(15.9)	(14.8)
Real Estate	17,580	19,055	20,943	23,334	26,575	30,262	34,066
General Government	51,755	56,930	64,220	79,737	98,575	114,944	133,688
Education	3,190	3,496	8,376	9,492	11,133	12,828	14,558
Health	6,021	6,563	9,908	10,961	12,971	14,797	16,595
Other Services ^{2/}	5,907	6,439	13,359	15,446	18,234	21,339	24,005

Source: Ministry of Economic Development.

() Percent change over same period in the previous year.

* Preliminary, subject to change.

1/ It is noteworthy to mention that the Ministry of Economic Development revised revising GDP data for FY 2009/2010 on a quarterly basis.

2/ Includes sewage services and information.

**Table (3) : Distribution of Total Investments by Economic Agents
(2010/2011 *)^{1/}**

	(LE Millions)					
	Government	Economic Authorities	Public Business Sector	Private Business Sector	Total	% to Total Investments
Total Investments	39881	16363	28092	144730	229066	100
Commodity Sector	8533	3265	22156	63038	96992	42.3
Agriculture, Irrigation & Fishing	2570	77	--	3558	6205	2.7
Crude Oil, Mining & Natural Gas	1	15	1648	34800	36464	15.9
Manufacturing Industries & Petroleum Products	201	22	4658	19880	24762	10.8
Electricity & Water	5691	3151	14963	--	23805	10.4
Construction & Building	70	--	888	4800	5757	2.5
Production Services	8649	4014	5886	43342	61892	27.0
Transportation & Communication ^{2/}	8588	3260	4687	27971	44506	19.4
Wholesale & Retail Trade	--	387	105	10000	10493	4.6
Financial Services, Insurance and Social solidarity	59	351	743	--	1153	0.5
Tourism	2.2	15.4	350	5372	5739	2.5
Social Services	22699	9084	50	38350	70183	31
Housing and Real Estate Activities	171	2194	--	30550	32915	14.4
Educational Services	2983	172	--	2650	5805	2.5
Health Services	2610	197	--	2350	5156	2.3
Other Services ^{3/}	16935	6522	50	2800	26306	11.5
Memorandum Items: Production Indices for Main Economic Sectors (2002 = 100)						
	2009/2010		2010/11			
	Jan-Mar	Apr-Jun	Jul-Sep	Oct-Dec	Jan-Mar	Apr-Jun
General Index	187.5	182.3	175.4	174.5	162.3	172.7
Manufacturing Industries ^{4/}	140.3	144.9	130.8	136.9	128.2	170.2
Oil Products	148.4	149.9	156.7	144.4	154.1	144.3
Natural Gas	172.1	173.2	170.1	163.9	183.6	190.3
Electricity	166.4	179.1	177.5	173.7	166.0	183.9
Construction	211.0	163.7	217.1	179.8	191.1	166.5
Transportation ^{5/}	85.6	85.4	82.8	85.0	83.6	75.2
Suez Canal ^{6/}	247.2	242.4	243.6	239.1	275.0	276.8
Tourism	396.9	377.5	333.9	346.7	260.1	246.2

Source: Ministry of Economic Development.

* Preliminary, subject to change.

-- Data unavailable.

1/ Excluding change in inventory.

2/ Including Suez Canal.

3/ Including information, sewage services, and resettlements.

4/ Manufacturing index was revised in October 2010.

5/ Excluding Suez Canal.

6/ Based on Suez Canal receipts in US dollars.