

Section 2

REAL SECTOR INDICATORS

Table (1) Gross Domestic Product at Market Prices (Current Prices).....	11
Table (2) Gross Domestic Product by Sector at Factor Cost (Current Prices).....	12
Table (3) Distribution of Total Investments by Economic Agents and Production.....	13
Indices for Main Economic Sectors	

Table (1) :Gross Domestic Product (at Market Prices) ^{1/}
(In Current Prices)
(LE Billions)

	2008/09	2009/10	2010/11	2011/12	2012/13	2013/14 ^{2/}	Jul-Sep 2013/14*	Jul-Sep 2014/15 [#]
GDP	1042.2	1206.6	1371.1	1575.5	1753.3	1997.6	518.0	604.0
	(16.4)	(15.8)	(13.6)	(14.9)	(11.3)	(13.9)	(16.2)	(16.6)
Domestic Demand	1111.4	1269.8	1427.6	1708.1	1871.2	2174.7	559.9	645.3
Final Consumption	911.4	1034.5	1193.1	1450.0	1622.6	1894.1	505.3	577.7
Private Consumption	793.1	899.8	1036.1	1271.0	1417.8	1654.1	448.3	512.0
Public Consumption	118.3	134.7	157.0	179.0	204.8	240.0	57.0	65.7
Investment ^{3/}	200.0	235.3	234.5	258.1	248.6	280.6	54.6	67.6
Net Exports	-69.2	-63.2	-56.5	-132.6	-117.9	-177.1	-41.9	-41.3
Exports of Goods and Services ^{4/}	260.1	257.6	282.0	274.6	316.6	303.4	70.3	91.9
Imports of Goods and Services	329.3	320.8	338.5	407.2	434.5	480.5	112.2	133.2
Memorandum Items: (In Percent of GDP)								
Final Consumption	87.4	85.7	87.0	92.0	92.5	94.8	97.5	95.6
Investment ^{3/}	19.2	19.5	17.1	16.4	14.2	14.0	10.5	11.2
Exports of Goods and Services ^{4/}	25.0	21.3	20.6	17.4	18.1	15.2	13.6	15.2
Imports of Goods and Services	31.6	26.6	24.7	25.8	24.8	24.1	21.7	22.1

Source: Ministry of Planning.

* Preliminary, subject to change. According to the Ministry of Planning, GDP (at market prices) for 2013/2014 was revised to reach LE 1997.6 billion compared to LE 1753 billion in 2012/2013. It is also worthy to note that GDP estimates for 2014/2015 have been revised to LE 2321.1 billion in light of 2013/2014 actuals.

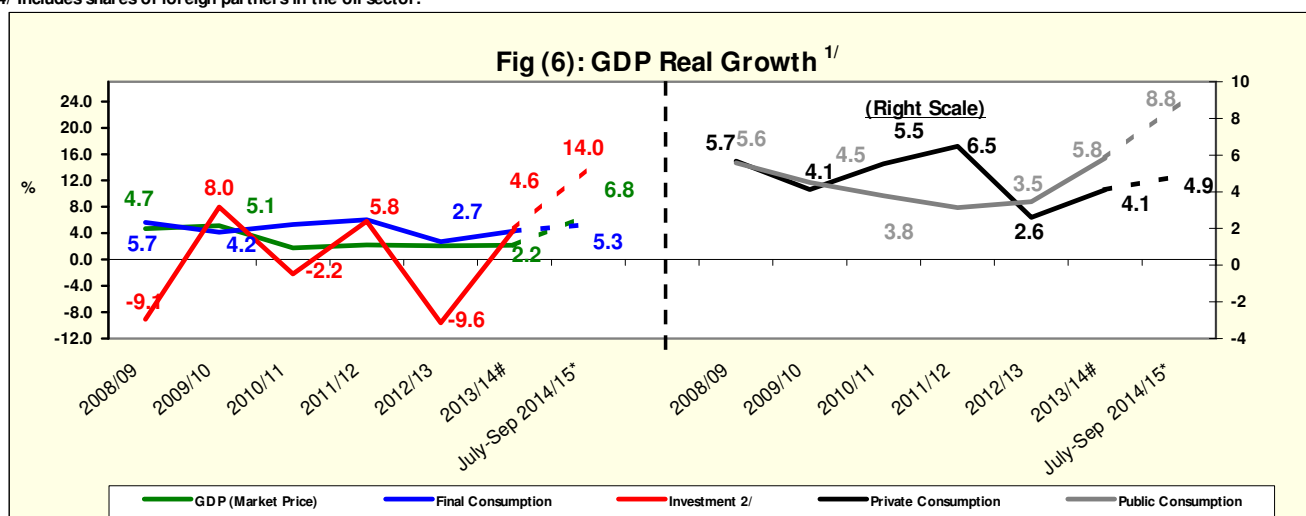
() Percent change over same period in the previous year.

1/ Includes net indirect taxes.

2/ It is noteworthy that the Ministry of Planning is revising GDP data for FY 2013/2014 on a quarterly basis.

3/ Includes fixed capital formation and change in inventory. The change in inventory amounted to LE 2.9 billion during the period July-September 2014/15, compared to LE 3.7 billion during the period July-September 2013/14.

4/ Includes shares of foreign partners in the oil sector.



Source: Ministry of Planning.

Revised

* Preliminary, subject to change.

() Percent change over same period in previous year.

1/ Using 2001/02 prices for the period 2002/03 - 2006/07, and 2006/07 prices for the period from 2007/08 to 2011/12, and 2011/12 prices for the period beginning 2012/13.

2/ Includes fixed capital formation and change in inventory.

Table (2) : Gross Domestic Product by Sector (at Factor Cost)
(In Current Prices)

							(LE Millions)	
	2008/09	2009/10	2010/11	2011/12	2012/13	2013/14 ^{1/}	July-Sep 2013/14 [#]	July-Sep 2014/15 [*]
GDP	994,055	1,150,590	1,309,906	1,508,527	1,677,352	1,910,615	497,341	580,006
	(16.2)	(15.7)	(13.8)	(15.2)	(11.2)	(13.9)	(16.2)	(16.6)
Total Commodity Sector	508,001	591,903	682,156	808,871	899,251	1,038,684	276,696	314,219
	(16.3)	(16.5)	(15.2)	(18.6)	(11.2)	(15.5)	(18.5)	(13.6)
Agriculture, Forestry and Fishing	135,465	160,970	190,159	218,216	243,356	276,732	87,523	101,515
Extractive Industry	147,966	165,747	195,136	261,671	290,739	329,815	89,367	79,469
Petroleum	61,759	68,538	81,566	110,619	124,748	146,953	38,978	38,444
Natural Gas	82,206	92,538	108,206	145,040	159,344	175,371	48,621	39,005
	(11.9)	(12.6)	(16.9)	(34.0)	(9.9)	(10.1)	(23.1)	-(19.8)
Other	4,001	4,671	5,364	6,012	6,647	7,491	1,768	2,021
Manufacturing Industry	164,523	194,290	216,184	238,283	262,505	314,077	72,786	99,969
Petroleum Refinement	10,257	12,516	14,829	16,837	19,612	23,083	5,614	5,418
Other	154,266	181,774	201,355	221,446	242,893	290,995	67,172	94,551
Electricity	13,043	14,897	16,832	19,080	21,237	23,919	5,976	7,102
Water	2,977	3,390	3,775	4,239	4,667	5,207	1,308	1,491
Construction and Building	44,026	52,609	60,070	67,382	76,747	88,934	19,736	24,674
	(19.7)	(19.5)	(14.2)	(12.2)	(13.9)	(15.9)	(16.4)	(25.0)
Total Production Services	318,566	364,518	404,837	445,903	491,687	539,375	137,139	164,748
	(13.9)	(14.4)	(11.1)	(10.1)	(10.3)	(9.7)	(9.5)	(20.1)
Transport and Warehousing	40,962	47,400	53,351	60,513	67,212	76,132	19,820	23,092
Telecommunications	31,185	34,818	37,301	38,670	41,160	44,837	10,382	11,265
Suez Canal	26,826	25,803	29,311	31,203	32,396	37,236	9,224	10,562
	-(6.6)	-(3.8)	(13.6)	(6.5)	(3.8)	(14.9)	(15.0)	(14.5)
Wholesale and Retail Trade	113,398	133,774	150,658	166,330	183,831	209,096	53,383	62,125
Financial Intermediation	36,125	41,174	44,834	49,741	54,814	61,907	17,043	19,746
Insurance and Social Insurance	35,689	41,521	47,627	53,663	59,513	67,698	16,723	19,781
Tourism (Hotels and Restaurants)	34,382	40,028	41,755	45,783	52,761	42,469	10,564	18,178
	(6.0)	(16.4)	(4.3)	(9.6)	(15.2)	-(19.5)	-(19.7)	(72.1)
Total Social Services	167,488	194,170	222,912	253,753	286,414	332,557	83,506	101,039
	(20.5)	(15.9)	(14.8)	(13.8)	(12.9)	(16.1)	(20.8)	(21.0)
Real Estate	26,575	30,262	34,066	38,035	43,474	51,251	12,199	14,391
General Government	98,575	114,944	133,688	153,984	174,713	202,949	51,321	63,405
Education	11,133	12,828	14,558	16,229	17,950	20,684	5,112	5,928
Health	12,971	14,797	16,595	18,560	20,610	23,568	6,066	7,056
Other Services ^{2/}	18,234	21,339	24,005	26,945	29,667	34,105	8,808	10,260

Source: Ministry of Planning.

() Percent change over same period in the previous year.

* Preliminary, subject to change.

1/ It is noteworthy that the Ministry of Planning is revising GDP data for FY 2013/2014 on a quarterly basis.

2/ Includes sewage sector, and the information sector.

Table (3) : Distribution of Total Investments by Economic Agents
(2013/2014*) ^{1/2/}

	(LE Millions)					
	Government	Economic Authorities	Public Business Sector	Private Business Sector	Total	%to Total Investments
Total Investments	51095	23772	25277	164947	265091	100
Commodity Sector	8645	2814	18138	83858	113455	42.8
Agriculture, Irrigation & Fishing	3828	75	0.1	7481	11384	4.3
Crude Oil, Mining & Natural Gas	-	20	1918	26800	28738	10.8
Manufacturing Industries & Petroleum Products	113	38	6017	46237	52404	19.8
Electricity & W ater	4655	2681	9447	1500	18283	6.9
Construction & Building	50	-	756	1840	2646	1.0
Production Services	10388	4441	7041	40769	62639	23.6
Transportation & Communication ^{3/}	10346	4209	4311	30969	49835	18.8
W holesale & Retail Trade	0.9	115	514	7700	8330	3.1
Financial Services, Insurance and Social solidarity	32	94	915	-	1042	0.4
Tourism	10	23	1300	2100	3432	1.3
Social Services	32062	16518	98	40320	88998	33.6
Housing and Real Estate Activities	3475	309	-	28120	31904	12.0
Educational Services	3724	38	-	4000	7762	2.9
Health Services	2248	247	-	3000	5495	2.1
Other Services ^{4/}	22616	15924	98	5200	43837	16.5

REAL SECTOR
INDICATORS

Memorandum Items: Production Indices for Main Economic Sectors (2002 = 100)						
	2012/2013	2013/2014				2014/2015
	Apr- Jun	Jul- Sep	Oct- Dec	Jan- Mar	Apr- Jun	Jul- Sep
General Index	176.2	139.3	142.8	180.3	187.4	173.4
Manufacturing Industries ^{5/}	150.5	129.7	135.2	168.5	196.9	170.0
Oil Products	157.2	145.6	153.3	159.3	167.1	162.9
Natural Gas	200.2	189.8	178.5	191.1	181.2	183.8
Electricity	211.4	195.8	189.0	205.1	218.6	199.3
Construction	154.3	206.7	181.2	216.5	161.7	207.0
Transportation ^{6/}	67.1	49.8	63.5	71.7	81.3	68.9
Suez Canal ^{7/}	262.4	257.6	255.2	272.8	285.4	283.7
Tourism	318.0	128.6	142.5	258.7	251.6	219.2

Source: Ministry of Planning.

* Preliminary, subject to change.

-- Data unavailable.

1/ It is noteworthy that detailed data for the period July-September 2014/2015 is not yet available, and will be published once finalized.

2/ Excluding change in inventory.

3/ Including Suez Canal and Information.

4/ Including settlements, sewage services, and replacing and maintenance of assets.

5/ Manufacturing and construction index was revised during the period from September 2013 till September 2014.

6/ Excluding Suez Canal.

7/ Based on Suez Canal receipts in US dollars.